

Contents

المحتويات

Reported and Registered Births and Deaths 2008	Table 3.1, page 3	2008	
Vital Statistics Reported Data 2004 - 2008	Table 3.2, page 4	2008 - 2004	
Reported Births by Place of Birth and Sex 2008	Table 3.3, page 5	2008	
Registered Live Births by Place of Birth, Sex and Father's Nationality 2008	Table 3.4, page 6	2008	
Registered Live Births by Place of Births and Father's Nationality 2008	Figure 3.1, page 7	2008	
Registered Live Births by Geographical Region of the Residence and Father's Nationality 2008	Table 3.5, page 8	2008	
Registered Live Births by Health Region / Health Center, Sex and Father's Nationality 2008	Table 3.6, page 9	2008	/
Registered Live Births by Birth Weight, Mother's Nationality and Age Groups 2008	Table 3.7, page 10	2008	
Birth Weight in (kg) by Mother's Nationality 2008	Figure 3.2, page 11	2008	()
Registered Live Births by Birth Intervals, Mother's Nationality and Age Groups 2008	Table 3.8, page 12	2008	
Registered Births by Mother's Nationality, Sex and Age of Fetus 2008	Table 3.9, page 13	2008	
Registered Live Births by Governorates, Sex and Father's Nationality 2008	Table 3.10, page 14	2008	
Reported Deaths by Governorates, Sex and Nationality 2008	Table 3.11, page 14	2008	
Crude Registered Birth & Death Rate Per 1000 Population by Nationality 1999 - 2008	Figure 3.3, page 15	2008 - 1999	1000
Reported Deaths by Place of Death, Nationality and Sex 2008	Table 3.12, page 16	2008	
Reported Deaths by Place of Death 2004 - 2008	Table 3.13, page 17	2008 - 2004	
Reported Deaths by Age Groups, Nationality and Sex 2008	Table 3.14, page 18	2008	
Death Rate per 1000 population By Age Groups, Nationality & Sex 2008	Figure 3.4, page 19	2008	1000
Reported Deaths by Cause of Death, Nationality and Sex 2008	Table 3.15, page 20	2008	
Number and Percentage of Reported Deaths by Nationality and Cause of Death 2008	Figure 3.5, page 22	2008	

3 - Vital Statistics ... (cont'd)

Reported Deaths by Geographical Region and Age Groups 2008	Table 3.16, page 23
Reported Deaths by Health Region / Health Center and Age Groups 2008	Table 3.17, page 24
Reported Deaths by Cause of Death and Age Groups 2008	Table 3.18, page 25
Reported Deaths by Geographical Region and Cause of Death 2008	Table 3.19, page 27
Death Rates Per 100,000 Population by Cause of Death and Nationality 2004 - 2008	Table 3.20, page 29
The Top Ten Leading Causes of Death Per 100,000 Population 2004 - 2008	Table 3.21, page 31
The Top Ten Leading Causes of Death Rates Per 100,000 Population 2004 - 2008	Figure 3.6, page 32
The Top Ten Leading Causes of Death by Principal Diagnosis, Nationality and Sex 2008	Table 3.22, page 35
Infant Top Ten Leading Causes of Death by Principal Diagnosis, Nationality and Sex 2008	Table 3.23, page 36

3 - الإحصاءات الحيوية... (تابع)

2008
2008 /
2008
2008
2008 - 2004 100,000
2008 - 2004 100,000
2008 - 2004 100,000
2008
2008

Conventions

Reported Births: are births notified by Maternity hospitals in the Kingdom without issuing Birth certificate.

Registered Births: are births registered at Births & Deaths Registration Office at Public Health Directorate when a birth certificate is sought for a child. This is all births in the year including those that took place in the year and were registered during the 1st three months of the following year.

Total reported births figure is used in calculating births rates.

Three auditing studies were conducted on Infant Mortality to review 2004 data, and accordingly the data was reviewed and modified.

الإصطلاحات

:

:

2004

Table 3.1
2008
Reported and Registered Births and Deaths 2008

<i>Indicators</i>	<i>Registered</i>			<i>Reported</i>			
	<i>Total</i>	<i>Female</i>	<i>Male</i>	<i>Total</i>	<i>Female</i>	<i>Male</i>	
Births	Live	17,022	8,345	8,677	16,975	8,314	8,661
	Still	17	5	12	112	50	62
	Total	17,039	8,350	8,689	17,087	8,364	8,723
Deaths	2,302	881	1,421	2,390	921	1,469	

Note: Reported Births excluding born abroad .

Latest analysis done on 26th April 2009 .

26 أبريل 2009 .

Table 3.2
2008 - 2004
Vital Statistics Reported Data 2004 - 2008

<i>Indicator</i>	<i>2008</i>	<i>2007</i>	<i>2006</i>	<i>2005</i>	<i>2004</i>	
Number						
Live births	16,975	15,968	15,034	15,123	14,915	
Still births	112	109	94	112	124	
Total births (live & still births)	17,087	16,077	15,128	15,235	15,039	()
Premature births	1,948	1,757	1,542	1,489	1,617	
Deaths among children < 5 Years						
< 7 days	38	53	34	43	54	
7 days to < 4 wks	15	26	22	33	31	4
4 wks to < 1 yr	74	54	59	58	50	4
< 1 yr	127	133	115	134	135	
1-4 yrs	33	32	37	31	26	4
< 5 yrs	160	165	152	165	161	5
Maternal deaths	3	3	2	1	3	
Total deaths	2,390	2,270	2,317	2,221	2,215	
Rates						
Crude birth rate/1000 population	15.3	15.4	20.2	20.9	21.1	1000
Still birth rate/1000 births	6.6	6.8	6.2	7.4	8.2	1000
Premature birth rate/1000 live births	114.8	110.0	102.6	98.5	108.4	1000
Sex ratio at birth : Male / (per 100 Female)	104.2	103.6	102.6	103.8	100.5	(100) / :
Mean of life expectancy at birth	74.8	74.8	74.8	74.8	73.8	
Prenatal mortality rate/1000 births	8.8	10.1	8.5	10.2	11.8	1000
Neonatal mortality rate/1000 live births	3.1	4.9	3.7	5.0	5.7	1000
Postneonatal mortality rate/1000 live births	4.4	3.4	3.9	3.8	3.4	1000
Infant mortality rate/1000 live births	7.5	8.3	7.6	8.9	9.1	1000
Under 5 yrs mortality/1000 live births	9.4	10.3	10.1	10.9	10.8	1000 5
Under 5 yrs mortality/1000 child<5yrs old	2.0	2.2	2.4	2.7	2.6	5 5
Maternal mortality rate/100,000 live births	17.7	18.8	13.3	6.6	20.1	100,000
Crude death rate/1000 population	2.2	2.2	3.1	3.1	3.1	1000

Note: a) All data excluding abroad births.

b) Deaths include some visitors.

Table 3.3
2008
Reported Births by Place of Birth and Sex 2008

Place of Birth	Multiple Births				Total Births			Still Births		Live Births	
	Sextuplets	Quadruplets	Triples	Twins	Total	Female	Male	Female	Male	Female	Male
MOH Hospitals	1	1	15	167	10,981	5,319	5,662	32	47	5,287	5,615
Salmaniya Medical Complex	1	1	15	156	6,171	2,950	3,221	24	37	2,926	3,184
Muharraq Maternity Hospital	-	-	-	1	1,174	561	613	1	2	560	611
Jidhafs Maternity Hospital	-	-	-	10	3,598	1,791	1,807	7	8	1,784	1,799
Sitra Maternity Hospital	-	-	-	-	23	12	11	-	-	12	11
Western Region Maternity Hospital	-	-	-	-	9	3	6	-	-	3	6
Riffa Maternity Hospital	-	-	-	-	6	2	4	-	-	2	4
Military Hospital	-	2	1	52	4,053	2,005	2,048	13	13	1,992	2,035
Private Hospitals	-	-	-	32	1,946	972	974	3	2	969	972
International Hospital of Bahrain	-	-	-	9	303	145	158	-	-	145	158
American Mission Hospital	-	-	-	6	644	318	326	-	1	318	325
Awali Hospital	-	-	-	1	142	78	64	1	-	77	64
Ibn Al-Nafees Hospital	-	-	-	4	202	108	94	-	-	108	94
Bahrain Specialist Hospital	-	-	-	12	558	269	289	2	1	267	288
Noor Specialist Hospital	-	-	-	-	36	19	17	-	-	19	17
Al-Hilal Hospital	-	-	-	-	61	35	26	-	-	35	26
At Home and On Route to Hospital	-	-	-	-	107	68	39	2	-	66	39
Total *	1	3	16	251	17,087	8,364	8,723	50	62	8,314	8,661

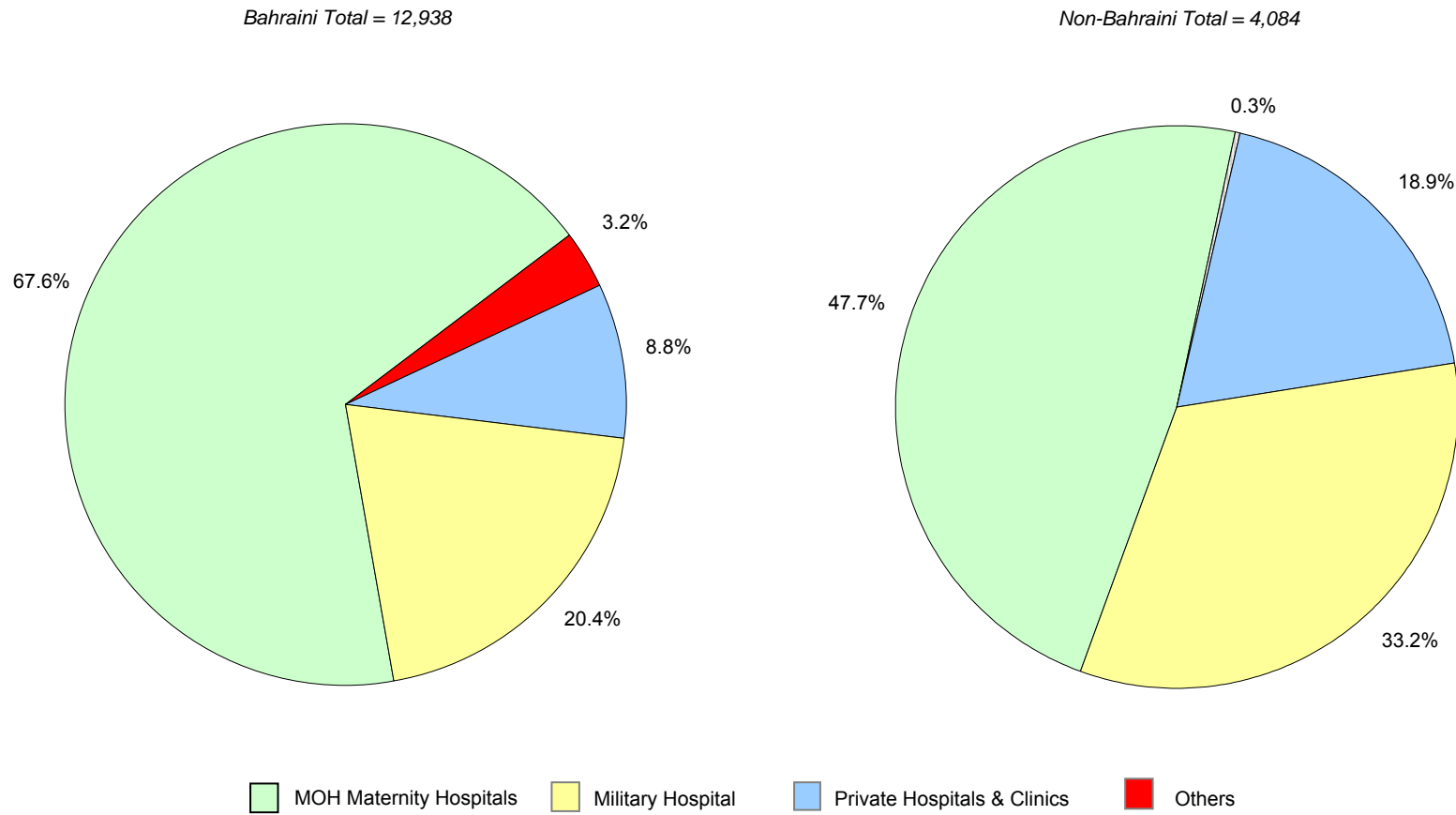
* Excluding born abroad .

* لا تشمل المواليد في الخارج .

Table 3.4
2008
Registered Live Births by Place of Birth, Sex and Father's Nationality 2008

<i>Place of Birth</i>	<i>Total</i>			<i>Non-Bahraini</i>			<i>Bahraini</i>		
	<i>Total</i>	<i>Female</i>	<i>Male</i>	<i>Total</i>	<i>Female</i>	<i>Male</i>	<i>Total</i>	<i>Female</i>	<i>Male</i>
Ministry of Health	10,689	5,205	5,484	1,947	931	1,016	8,742	4,274	4,468
Salmaniya Medical Complex	5,937	2,861	3,076	953	447	506	4,984	2,414	2,570
Muharraq Maternity	1,159	559	600	372	186	186	787	373	414
Jidhafs Maternity	3,553	1,766	1,787	617	295	322	2,936	1,471	1,465
Sitra Maternity	23	12	11	1	1	-	22	11	11
Western Region Maternity	9	3	6	-	-	-	9	3	6
Riffa Maternity	8	4	4	4	2	2	4	2	2
Military Hospital	3,995	1,981	2,014	1,354	672	682	2,641	1,309	1,332
Private Hospitals	1,913	955	958	772	379	393	1,141	576	565
International Hospital of Bahrain	300	142	158	67	30	37	233	112	121
American Mission Hospital	629	310	319	362	175	187	267	135	132
Awali Hospital	140	78	62	55	28	27	85	50	35
Ibn Al-Nafees Hospital	200	107	93	54	29	25	146	78	68
Bahrain Specialist Hospital	549	264	285	193	92	101	356	172	184
Noor Specialist Hospital	35	19	16	3	3	-	32	16	16
Al-Hilal Hospital	60	35	25	38	22	16	22	13	9
At Home and on Route to Hospital	62	37	25	11	7	4	51	30	21
Born Abroad (Bahraini only)	363	167	196	NA	NA	NA	363	167	196
Other Countries of Gulf Co-operation Council	214	105	109	NA	NA	NA	214	105	109
Other Arabic Countries	94	40	54	NA	NA	NA	94	40	54
Asian Countries	15	4	11	NA	NA	NA	15	4	11
European Countries	23	11	12	NA	NA	NA	23	11	12
American Countries	11	3	8	NA	NA	NA	11	3	8
Other Countries	6	4	2	NA	NA	NA	6	4	2
Total	17,022	8,345	8,677	4,084	1,989	2,095	12,938	6,356	6,582

Figure 3.1
2008
Registered Live Births By Place of Births & Father's Nationality 2008



Reference: Table 3.4

مرجع: جدول 3.4

Table 3.5
2008
Registered Live Births by Geographical Region of the Residence and Father's Nationality 2008

Place of Birth	Total	Geographical Region											
		Southern	Hamad Town	Western	Riffa	Isa Town	Central	Sitra	Northern	Jidhafs	Manama	Muharraq	Hidd
Bahraini													
Government Hospitals	11,383	48	1122	824	1295	754	1192	1030	981	1352	985	1602	198
Private Hospitals	1,141	5	55	32	135	73	155	45	103	126	182	193	37
At Home and On route to Hospital	51	-	6	10	3	3	6	8	2	5	4	4	-
Born Abroad	363	3	41	13	80	29	19	7	25	11	57	67	11
Total	12,938	56	1,224	879	1,513	859	1,372	1,090	1,111	1,494	1,228	1,866	246
Non-Bahraini													
Government Hospitals	3,301	20	133	60	862	95	85	31	87	53	1159	640	76
Private Hospitals	772	-	5	17	49	5	33	5	105	37	445	56	15
At Home and On route to Hospital	11	-	-	-	1	-	-	1	1	-	4	4	-
Born Abroad	NA	NA	NA	NA	NA	NA	NA	NA	NA	NA	NA	NA	NA
Total	4,084	20	138	77	912	100	118	37	193	90	1,608	700	91
Total													
Government Hospitals	14,684	68	1,255	884	2,157	849	1,277	1,061	1,068	1,405	2,144	2,242	274
Private Hospitals	1,913	5	60	49	184	78	188	50	208	163	627	249	52
At Home and On route to Hospital	62	-	6	10	4	3	6	9	3	5	8	8	-
Born Abroad (Bahraini only)	363	3	41	13	80	29	19	7	25	11	57	67	11
Total	17,022	76	1,362	956	2,425	959	1,490	1,127	1,304	1,584	2,836	2,566	337

Table 3.6
2008
Registered Live Births by Health Region / Health Center, Sex and Father's Nationality 2008

Health Region / Health Center	Total			Non-Bahraini			Bahraini			/
	Total	Female	Male	Total	Female	Male	Total	Female	Male	
Health Region I	2,898	1,426	1,472	788	396	392	2,110	1,030	1,080	المنطقة الصحية الأولى
Muharraq	905	452	453	356	175	181	549	277	272	
Sh.Salman	788	396	392	289	156	133	499	240	259	
National Bank of Bahrain - Arad	733	335	398	114	47	67	619	288	331	-
National Bank of Bahrain - Dair	472	243	229	29	18	11	443	225	218	-
Health Region II	2,489	1,206	1,283	1,582	767	815	907	439	468	المنطقة الصحية الثانية
Naim	766	402	364	482	250	232	284	152	132	
Ibn Sinna	473	230	243	344	160	184	129	70	59	
Sh.Sabah Al Salem	760	345	415	405	192	213	355	153	202	
Hoora	490	229	261	351	165	186	139	64	75	
Health Region III	5,679	2,792	2,887	526	247	279	5,153	2,545	2,608	المنطقة الصحية الثالثة
Isa Town	1,712	839	873	192	97	95	1,520	742	778	
Jidhafs	1,442	754	688	84	38	46	1,358	716	642	
Budaiya	1,305	609	696	195	85	110	1,110	524	586	
Bilad Al Kadeem	481	221	260	31	16	15	450	205	245	
A'Ali	739	369	370	24	11	13	715	358	357	
Health Region IV	5,956	2,921	3,035	1,188	579	609	4,768	2,342	2,426	المنطقة الصحية الرابعة
Hamad Town	822	405	417	83	45	38	739	360	379	
Sitra	1,127	532	595	36	18	18	1,091	514	577	
Hamad Kanoo	1,212	610	602	405	206	199	807	404	403	
East Riffa	1,305	635	670	536	250	286	769	385	384	
Kuwait	731	351	380	32	15	17	699	336	363	
Mohammad Jassim Kanoo *	667	342	325	60	26	34	607	316	291	*
Zallaq	92	46	46	36	19	17	56	27	29	
Jaw & Asker Clinic *	NA	NA	NA	NA	NA	NA	NA	NA	NA	*
Total	17,022	8,345	8,677	4,084	1,989	2,095	12,938	6,356	6,582	

* Jaw and Asker Clinic Births registered at Mohammed Jassim Kanoo Health Center.

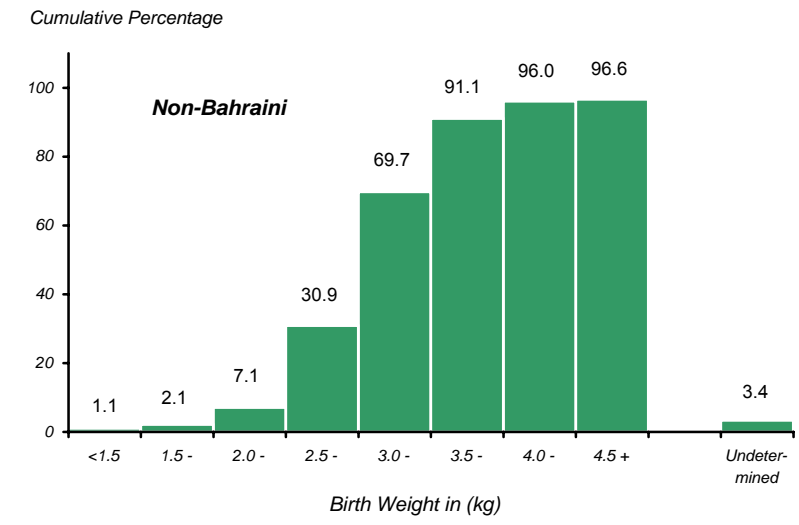
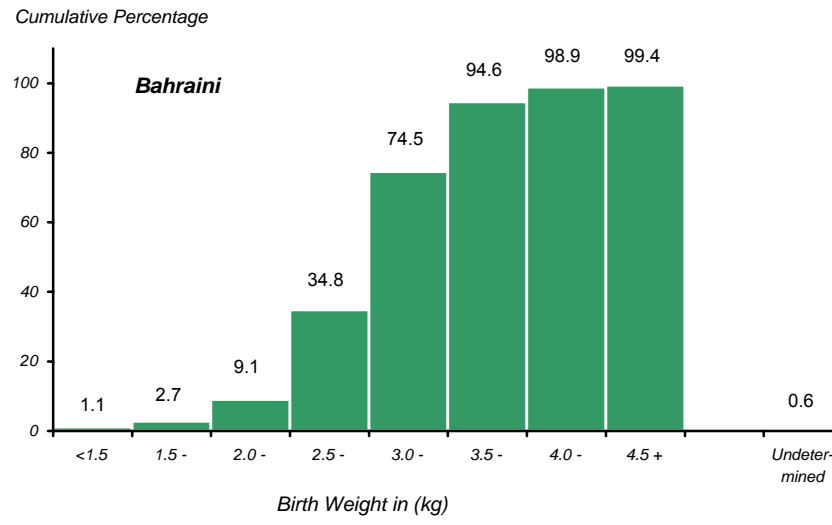
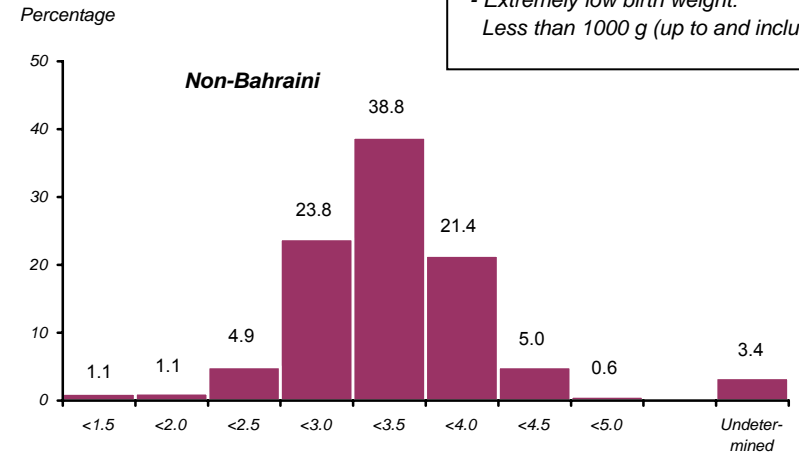
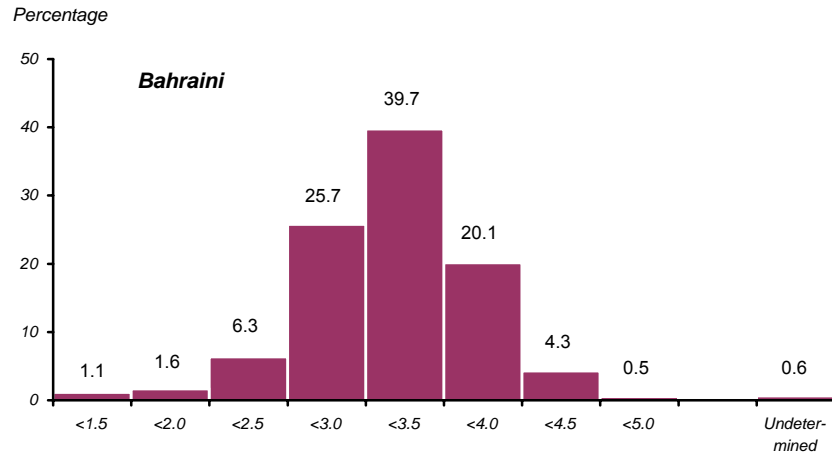
* تم تسجيل مواليد عيادة جو وعسكر بمركز محمد جاسم كانو .

Table 3.7
2008
Registered Live Births by Birth Weight, Mother's Nationality and Age Groups 2008

<i>Total</i>	<i>Birth weight (kg)</i>									<i>Mother</i>	
	<i>Undete- rmined</i>	<i>4.5+</i>	<i>4.0+</i>	<i>3.5+</i>	<i>3.0+</i>	<i>2.5+</i>	<i>2.0+</i>	<i>1.5+</i>	<i>Less than 1.5</i>	<i>Nationality</i>	<i>Age Groups</i>
2	-	-	-	-	1	1	-	-	-	Bah	less than 15
2	-	-	-	-	1	1	-	-	-	Non-Bah	
259	1	1	4	38	89	106	14	3	3	Bah	15-19
174	12	-	3	34	61	49	13	1	1	Non-Bah	
2,659	6	2	70	429	1100	783	205	37	27	Bah	20-24
1,024	37	3	33	191	416	270	53	13	8	Non-Bah	
3,801	19	23	134	725	1578	992	238	59	33	Bah	25-29
1,791	55	10	84	383	692	436	88	20	23	Non-Bah	
2,859	21	16	159	636	1110	662	158	58	39	Bah	30-34
1,508	39	9	94	337	593	334	77	12	13	Non-Bah	
1,514	8	12	87	376	561	337	92	24	17	Bah	35-39
622	21	8	35	147	232	141	22	8	8	Non-Bah	
576	9	6	43	137	207	122	30	11	11	Bah	40-44
159	11	3	11	39	56	27	6	3	3	Non-Bah	
39	-	-	1	14	11	10	3	-	-	Bah	45-49
22	3	-	3	3	4	6	3	-	-	Non-Bah	
2	-	-	-	-	-	2	-	-	-	Bah	50+
4	-	-	-	-	3	1	-	-	-	Non-Bah	
5	5	-	-	-	-	-	-	-	-	Bah	Unknown
-	-	-	-	-	-	-	-	-	-	Non-Bah	
11,716	69	60	498	2,355	4,657	3,015	740	192	130	Bah	Total
5,306	178	33	263	1,134	2,058	1,265	262	57	56	Non-Bah	
17,022	247	93	761	3,489	6,715	4,280	1,002	249	186	Total	

Figure 3.2
2008 ()
Births Weight (kg) By Mother's Nationality 2008

Note:
 - Low birth weight:
 Less than 2500 g (up to and including 2499 g).
 - Very low birth weight:
 Less than 1500 g (up to and including 1499 g).
 - Extremely low birth weight:
 Less than 1000 g (up to and including 999 g).



Reference: Table 3.7

مرجع: جدول 3.7

Table 3.8
2008
Registered Live Births by Birth Intervals, Mother's Nationality and Age Groups 2008

<i>Total</i>	<i>Interval between current delivery and previous pregnancy</i>										<i>Mother</i>	
	<i>Undetermined</i>	<i>7+</i>	<i>6+</i>	<i>5+</i>	<i>4+</i>	<i>3+</i>	<i>2+</i>	<i>1+</i>	<i>Less than 1</i>	<i>NA</i>	<i>Nationality</i>	<i>Age Groups</i>
2	-	-	-	-	-	-	-	-	-	-	2 Bah	less than 15
2	-	-	-	-	-	-	-	-	-	-	2 Non-Bah	
259	1	-	-	-	1	4	6	22	-	225 Bah	15-19	
174	-	-	-	1	-	3	7	27	3	133 Non-Bah		
2,659	23	1	8	25	87	195	292	342	16	1,670 Bah	20-24	
1,024	4	3	6	15	33	77	148	205	7	526 Non-Bah		
3,801	28	76	93	194	425	640	757	514	20	1,054 Bah	25-29	
1,791	8	52	45	77	154	244	323	274	9	605 Non-Bah		
2,859	31	271	175	279	404	478	525	372	7	317 Bah	30-34	
1,508	10	171	81	115	151	221	259	209	6	285 Non-Bah		
1,514	6	314	136	177	201	215	204	159	2	100 Bah	35-39	
622	3	146	52	50	63	75	90	78	2	63 Non-Bah		
576	-	191	64	53	75	69	63	37	-	24 Bah	40-44	
159	-	38	12	17	16	22	22	14	-	18 Non-Bah		
39	1	14	5	1	3	3	7	1	-	4 Bah	45-49	
22	-	6	4	3	2	-	2	4	-	1 Non-Bah		
2	-	1	-	-	-	-	1	-	-	- Bah	50+	
4	-	-	1	-	1	2	-	-	-	- Non-Bah		
5	-	-	-	-	-	-	-	-	-	5 Bah	Unknown	
-	-	-	-	-	-	-	-	-	-	- Non-Bah		
11,716	90	868	481	729	1,196	1,604	1,855	1,447	45	3,401 Bah		
5,306	25	416	201	278	420	644	851	811	27	1,633 Non-Bah	Total	
17,022	115	1,284	682	1,007	1,616	2,248	2,706	2,258	72	5,034 Total		

NA (Not Applicable) indicates 1st Delivery .

(NA)

Table 3.9
2008
Registered Births by Mother's Nationality, Sex and Age of Fetus 2008

<i>Total</i>			<i>Non-Bahraini</i>			<i>Bahraini</i>			<i>()</i> <i>Age of Fetus (weeks)</i>
<i>Total</i>	<i>Female</i>	<i>Male</i>	<i>Total</i>	<i>Female</i>	<i>Male</i>	<i>Total</i>	<i>Female</i>	<i>Male</i>	
398	192	206	256	121	135	142	71	71	less than 28 weeks
18	9	9	3	-	3	15	9	6	28
29	13	16	4	1	3	25	12	13	29
31	14	17	8	5	3	23	9	14	30
64	30	34	18	7	11	46	23	23	31
86	37	49	21	11	10	65	26	39	32
104	44	60	18	6	12	86	38	48	33
149	67	82	45	14	31	104	53	51	34
264	129	135	66	33	33	198	96	102	35
805	398	407	239	111	128	566	287	279	36
1,901	912	989	528	242	286	1,373	670	703	37
3,432	1,625	1,807	1,093	521	572	2,339	1,104	1,235	38
4,314	2,110	2,204	1,294	634	660	3,020	1,476	1,544	39
5,427	2,765	2,662	1,713	867	846	3,714	1,898	1,816	40 & over
17,022	8,345	8,677	5,306	2,573	2,733	11,716	5,772	5,944	Total

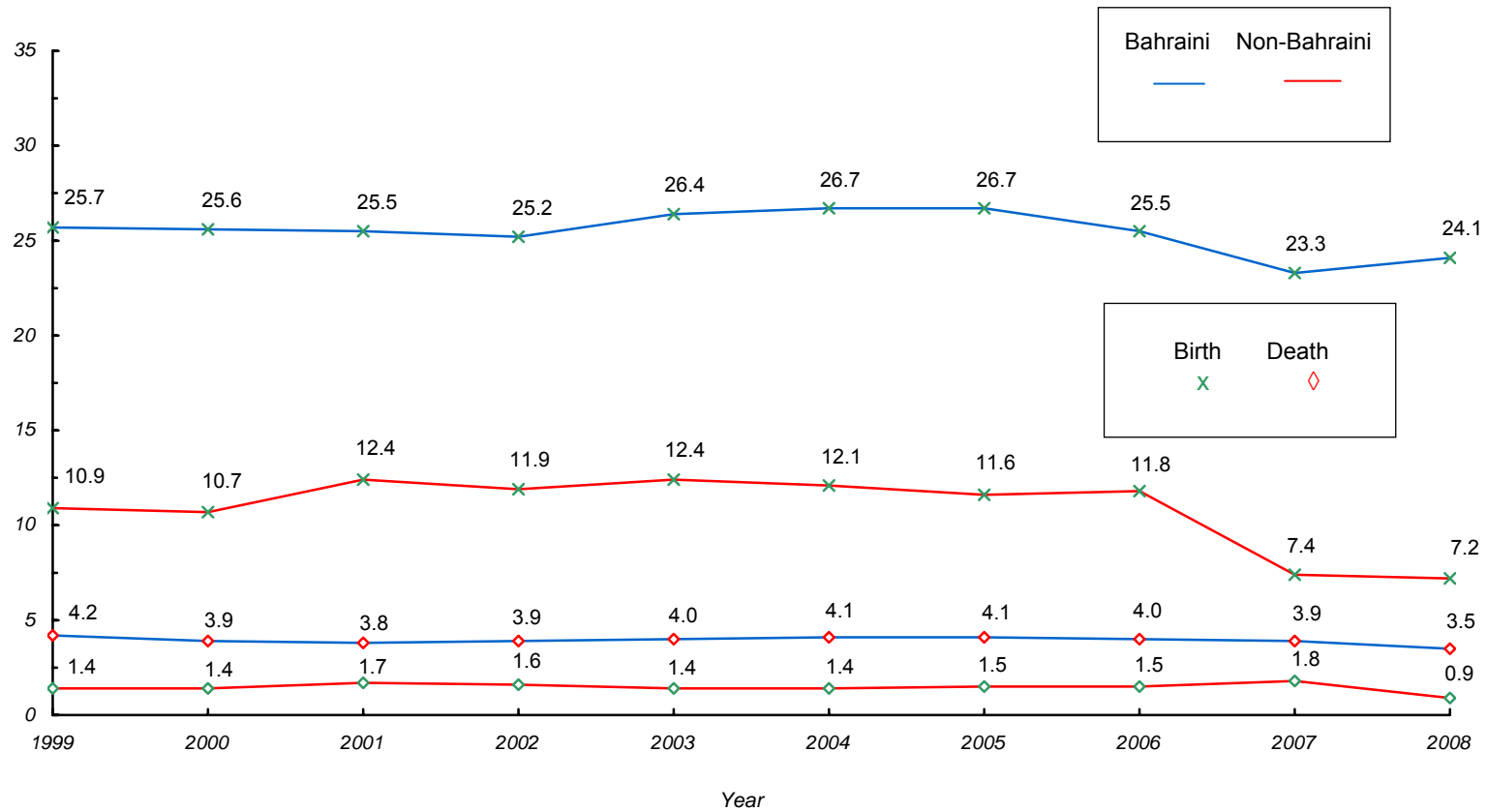
جدول 3.10
2008
Registered Live Births by Governorates, Sex and Father's Nationality 2008

<i>Governorate</i>	<i>Total</i>			<i>Non-Bahraini</i>			<i>Bahraini</i>		
	<i>Total</i>	<i>Female</i>	<i>Male</i>	<i>Total</i>	<i>Female</i>	<i>Male</i>	<i>Total</i>	<i>Female</i>	<i>Male</i>
Capital	2,970	1,427	1,543	1,613	783	830	1,357	644	713
Muharraq	2,898	1,426	1,472	788	396	392	2,110	1,030	1,080
Northern	4,967	2,461	2,506	454	209	245	4,513	2,252	2,261
Central	3,578	1,740	1,838	252	126	126	3,326	1,614	1,712
Southern	2,609	1,291	1,318	977	475	502	1,632	816	816
Total	17,022	8,345	8,677	4,084	1,989	2,095	12,938	6,356	6,582

جدول 3.11
2008
Reported Deaths by Governorates, Sex and Nationality 2008

<i>Governorate</i>	<i>Total</i>			<i>Non-Bahraini</i>			<i>Bahraini</i>		
	<i>Total</i>	<i>Female</i>	<i>Male</i>	<i>Total</i>	<i>Female</i>	<i>Male</i>	<i>Total</i>	<i>Female</i>	<i>Male</i>
Capital	556	189	367	212	35	177	344	154	190
Muharraq	460	196	264	53	15	38	407	181	226
Northern	548	226	322	50	12	38	498	214	284
Central	533	201	332	86	9	77	447	192	255
Southern	293	109	184	83	24	59	210	85	125
Total	2,390	921	1,469	484	95	389	1,906	826	1,080

Figure 3.3
2008 - 1999 **1000**
Crude Registered Birth & Death Rate Per 1000 Population by Nationality 1999 - 2008



Note: registered births by Father's nationality

Reference: Table 3.10, 3.11 , 2.2

2.2 3.11 و 3.10

Table 3.12
2008
Reported Deaths by Place of Death, Nationality and Sex 2008

Place of Death	Total			Non-Bahraini			Bahraini		
	Total	Female	Male	Total	Female	Male	Total	Female	Male
Ministry of Health Hospitals	1,188	542	646	158	44	114	1,030	498	532
Salmaniya Medical Complex	1,152	528	624	154	43	111	998	485	513
Psychiatric Hospital	1	1	-	-	-	-	1	1	-
Jidhafs Maternity Hospital	2	2	-	-	-	-	2	2	-
Muharraq Maternity Hospital	1	1	-	1	1	-	-	-	-
Muharraq Geriatrics Hospital	17	7	10	-	-	-	17	7	10
Health Centers	15	3	12	3	-	3	12	3	9
Other Government Hospitals	316	132	184	52	17	35	264	115	149
Military Hospital	309	130	179	52	17	35	257	113	144
Directorate of Health & Social Affairs	1	-	1	-	-	-	1	-	1
Essa Town Geriatric	3	2	1	-	-	-	3	2	1
Muharraq Social Care Center	3	-	3	-	-	-	3	-	3
Private Sector	28	12	16	9	2	7	19	10	9
Private Clinics & Polyclinics	1	1	-	-	-	-	1	1	-
American Mission Hospital	1	-	1	1	-	1	-	-	-
Awali Hospital	1	-	1	-	-	-	1	-	1
International Hospital of Bahrain	9	4	5	4	2	2	5	2	3
Ibn Al-Nafees Hospital	1	1	-	-	-	-	1	1	-
Bahrain Specialist Hospital	11	4	7	2	-	2	9	4	5
Al-Hilal Hospital	2	1	1	1	-	1	1	1	-
International Medical City Hospital	2	1	1	1	-	1	1	1	-
Home	482	168	314	101	14	87	381	154	227
Other Places in Bahrain	277	37	240	164	18	146	113	19	94
Born Abroad (Bahraini only)	99	30	69	-	-	-	99	30	69
Other Countries of Gulf Co-operation Council	36	14	22	-	-	-	36	14	22
Other Arabic Countries	32	7	25	-	-	-	32	7	25
Asian Countries	20	5	15	-	-	-	20	5	15
European Countries	7	3	4	-	-	-	7	3	4
American Countries	1	1	-	-	-	-	1	1	-
Other Countries	3	-	3	-	-	-	3	-	3
Total	2,390	921	1,469	484	95	389	1,906	826	1,080
Before the Law	6	5	1	1	1	-	5	4	1
Within the Law	49	34	15	12	8	4	37	26	11
Total	55	39	16	13	9	4	42	30	12

Note: Deaths include some visitors .

Table 3.13
2008 - 2004
Reported Deaths by Place of Death 2004 - 2008

<i>Place of Death</i>	<i>2008</i>	<i>2007</i>	<i>2006</i>	<i>2005</i>	<i>2004</i>	
Ministry of Health Hospitals	1,188	1,161	1,228	1,228	1,183	
Salmaniya Medical Complex	1,152	1,133	1,200	1,191	1,150	
Psychiatric Hospital	1	3	1	4	3	
Jidhafs Maternity Hospital	2	-	-	-	1	
Sitra Maternity Hospital	-	1	-	-	-	
Muharraq Geriatrics Hospital	17	18	18	21	20	
Muharraq Maternity Hospital	1	-	-	-	-	
Health Centers	15	6	9	12	9	
Other Government Hospitals	316	293	253	244	229	
Military Hospital	309	285	244	241	226	
Directorate of Health & Social Affairs	1	-	-	-	-	
Essa Town Geriatric	3	3	4	3	3	
Muharraq Social Care Center	3	5	5	-	-	
Private Sector	28	40	32	37	33	
Private Clinics & Polyclinics	1	4	3	2	2	
American Mission Hospital	1	3	4	5	9	
Awali Hospital	1	5	2	3	3	
International Hospital of Bahrain	9	16	11	12	10	
Ibn Al-Nafees Hospital	1	1	1	-	1	
Bahrain Specialist Hospital	11	9	11	15	8	
Al-Hilal Hospital	2	1	NA	NA	NA	
Noor Specialist Hospital	-	1	-	-	-	
International Medical City Hospital	2	NA	NA	NA	NA	
Home	482	459	479	467	503	
Other Places in Bahrain	277	229	253	186	181	
Abroad (Bahraini only)	99	88	72	59	86	()
Other Countries of Gulf Co-operation Council	36	38	38	19	27	
Other Arabic Countries	32	31	12	16	30	
Asian Countries	20	16	15	15	15	
European Countries	7	2	5	3	8	
American Countries	1	-	-	-	-	
Other Countries	3	1	2	6	6	
Total	2,390	2,270	2,317	2,221	2,215	

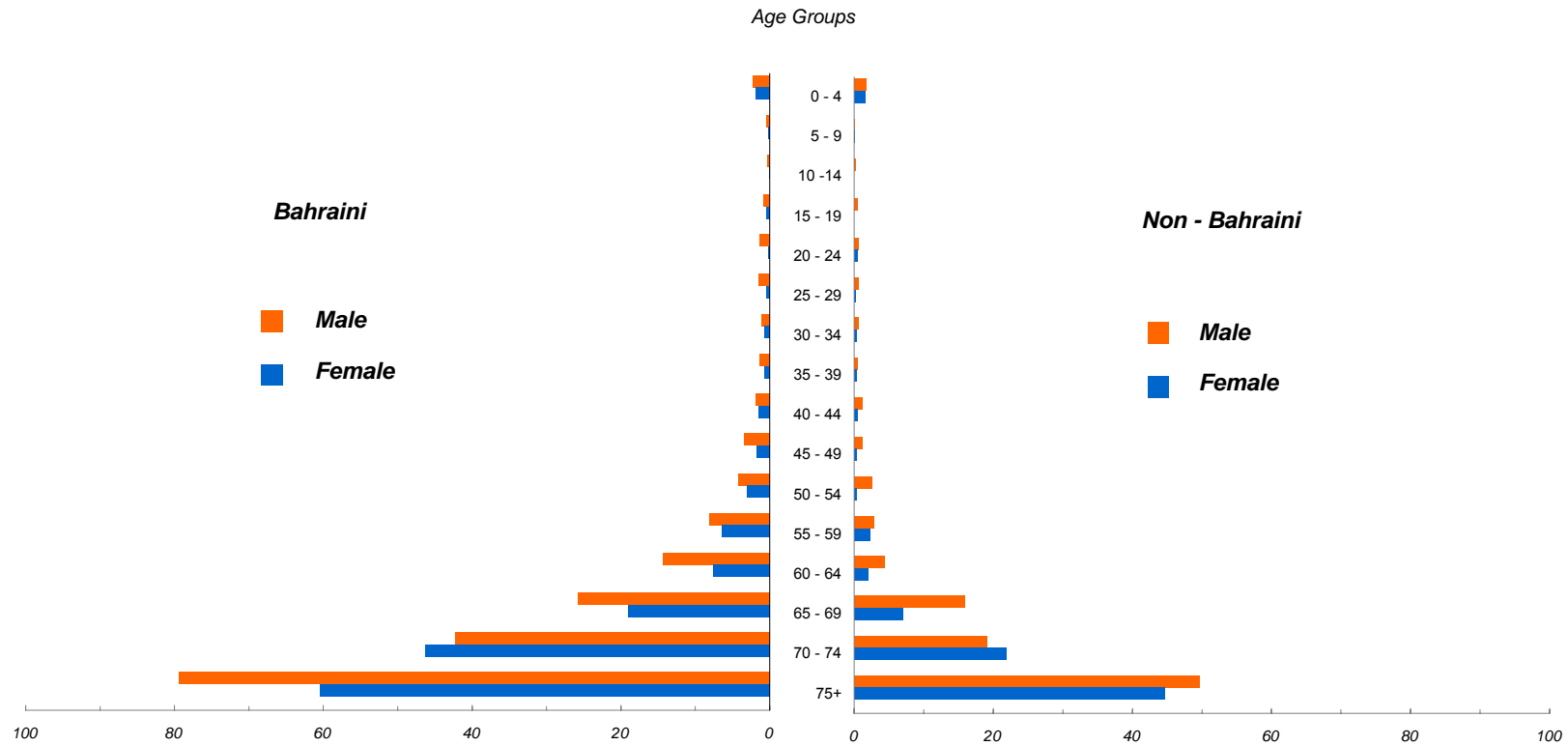
Note: Deaths include some visitors .

Table 3.14
2008
Reported Deaths by Age Groups, Nationality and Sex 2008

<i>Total</i>				<i>Non-Bahraini</i>				<i>Bahraini</i>				<i>()</i> <i>Age Groups (Years)</i>
<i>%</i>	<i>Total</i>	<i>Female</i>	<i>Male</i>	<i>%</i>	<i>Total</i>	<i>Female</i>	<i>Male</i>	<i>%</i>	<i>Total</i>	<i>Female</i>	<i>Male</i>	
1.6	38	20	18	1.9	9	5	4	1.5	29	15	14	< 1 week
0.6	15	7	8	1.2	6	2	4	0.5	9	5	4	7 days to < 4 wks 4
3.1	74	31	43	3.7	18	9	9	2.9	56	22	34	4 wks to < 1 yr 4
1.4	33	15	18	0.6	3	2	1	1.6	30	13	17	1 - 4
0.9	21	7	14	0.4	2	1	1	1.0	19	6	13	5 - 9
0.6	15	4	11	0.2	1	-	1	0.7	14	4	10	10 -14
1.6	39	11	28	0.4	2	-	2	1.9	37	11	26	15 - 9
2.8	68	15	53	5.6	27	9	18	2.2	41	6	35	20 - 24
3.8	91	14	77	9.9	48	5	43	2.3	43	9	34	25 - 29
3.8	91	22	69	11.8	57	9	48	1.8	34	13	21	30 - 34
3.0	72	21	51	7.6	37	8	29	1.8	35	13	22	35 - 39
5.0	120	35	85	12.6	61	8	53	3.1	59	27	32	40 - 44
5.2	125	32	93	9.1	44	4	40	4.2	81	28	53	45 - 49
6.2	149	38	111	12.6	61	2	59	4.6	88	36	52	50 - 54
6.6	158	55	103	7.2	35	6	29	6.5	123	49	74	55 - 59
5.2	125	39	86	2.9	14	2	12	5.8	111	37	74	60 - 64
8.6	206	86	120	3.1	15	3	12	10.0	191	83	108	65 - 69
11.5	274	150	124	2.7	13	6	7	13.7	261	144	117	70 - 74
28.3	676	319	357	6.4	31	14	17	33.8	645	305	340	75+
100.0	2,390	921	1,469	100.0	484	95	389	100.0	1,906	826	1,080	Total

Note : Deaths include some visitors .

Figure 3.4
2008 **1000**
Death Rate per 1000 population By Age Groups, Nationality & Sex 2008



Reference: Table 3.14 ,2.2

مرجع: جدول 3.14 و 2.2

Table 3.15
2008
Reported Deaths by Cause of Death, Nationality and Sex 2008

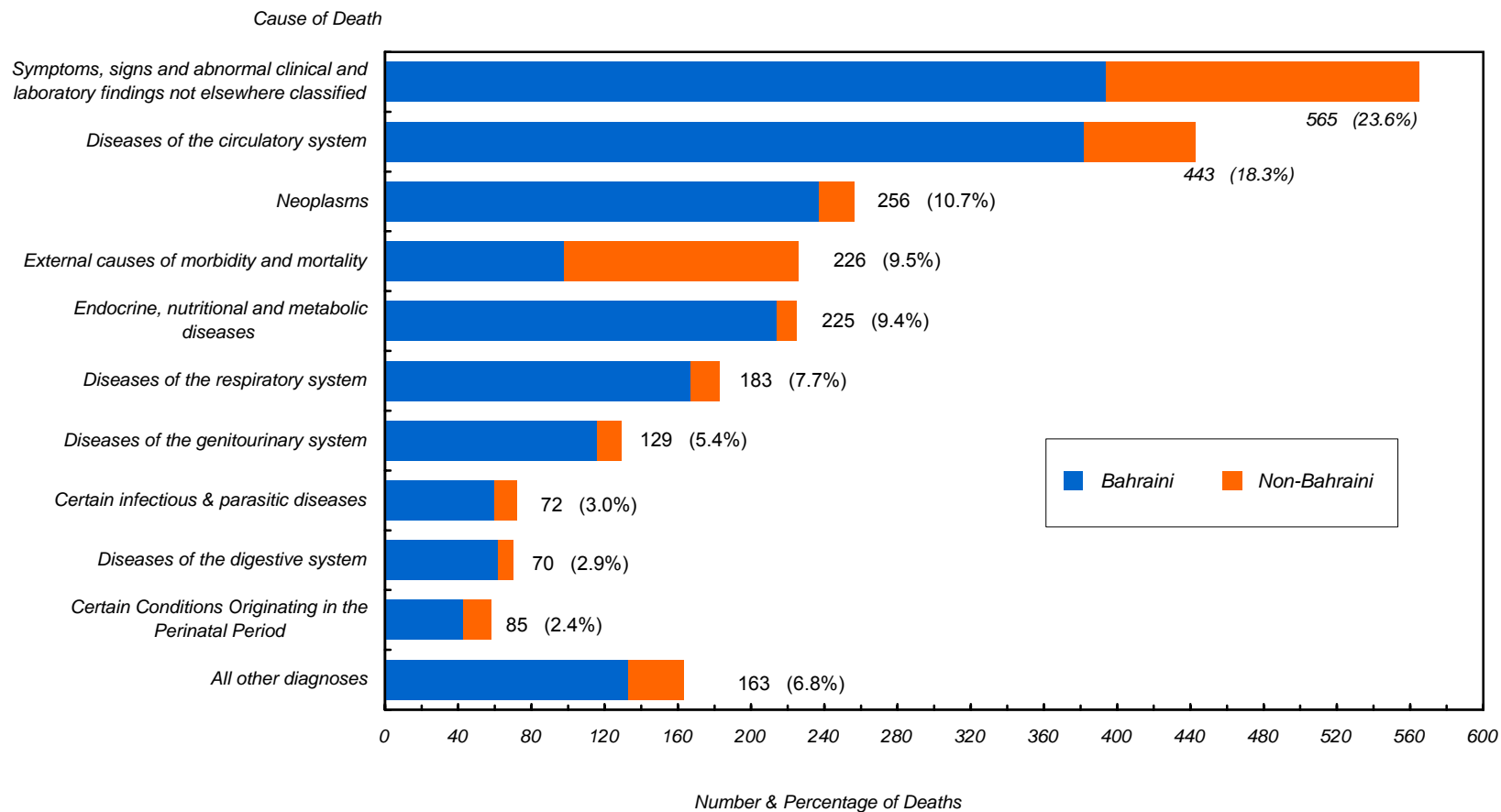
<i>Cause of Death</i>	<i>Nationality / Sex</i> /												<i>ICD-10 Code</i>
	<i>Total</i>				<i>Non Bahraini</i>				<i>Bahraini</i>				
	<i>Total</i>		<i>F</i>	<i>M</i>	<i>Total</i>		<i>F</i>	<i>M</i>	<i>Total</i>		<i>F</i>	<i>M</i>	
	<i>%</i>	<i>No.</i>			<i>%</i>	<i>No.</i>			<i>%</i>	<i>No.</i>			
Certain infectious & parasitic diseases	3.0	72	33	39	2.5	12	5	7	3.1	60	28	32	A00-B99
Neoplasms	10.7	256	122	134	3.9	19	10	9	12.4	237	112	125	C00-D49
Diseases of the blood and blood-forming organs and certain disorders involving the immune mechanism	1.6	38	15	23	0.8	4	-	4	1.8	34	15	19	D50-D89
Endocrine, nutritional and metabolic diseases	9.4	225	107	118	2.3	11	3	8	11.2	214	104	110	E00-E90
Mental and behavioural disorders	0.13	3	1	2	-	-	-	-	0.2	3	1	2	F00-F99
Diseases of the nervous system	2.0	47	21	26	2.1	10	3	7	1.9	37	18	19	G00-G99
Diseases of the circulatory system	18.5	443	208	235	12.6	61	13	48	20.0	382	195	187	I00-I99
Diseases of the respiratory system	7.7	183	71	112	3.3	16	3	13	8.8	167	68	99	J00-J99
Diseases of the digestive system	2.9	70	31	39	1.7	8	3	5	3.3	62	28	34	K00-K99
Diseases of the skin and subcutaneous tissue	0.8	20	11	9	0.2	1	1	-	1.0	19	10	9	L00-L99
Diseases of the musculoskeletal system and connective tissue	0.3	7	6	1	0.6	3	2	1	0.2	4	4	-	M00-M99

(Cont'd) Table 3.15 ()
 2008
 Reported Deaths by Cause of Death, Nationality and Sex 2008

Cause of Death	Nationality / Sex /												ICD-10 Code
	Total				Non Bahraini				Bahraini				
	Total		F	M	Total		F	M	Total		F	M	
	%	No.			%	No.			%	No.			
Diseases of the genitourinary system	5.4	129	51	78	2.7	13	3	10	6.1	116	48	68	N00-N99
Pregnancy, childbirth and the puerperium	0.1	3	3	-	0.2	1	1	-	0.1	2	2	-	O00-O99
Certain conditions originating in the perinatal period	2.4	58	31	27	3.1	15	7	8	2.3	43	24	19	P00-P99
Congenital malformation, deformations and chromosomal abnormalities	1.9	45	22	23	2.3	11	6	5	1.8	34	16	18	Q00-Q99
Symptoms, signs and abnormal clinical and laboratory findings not elsewhere classified	23.6	565	151	414	35.3	171	16	155	20.7	394	135	259	R00-R99
Injury, poisoning and certain other consequences of external causes	-	-	-	-	-	-	-	-	-	-	-	-	S00-T98
External causes of morbidity and mortality	9.5	226	37	189	26.4	128	19	109	5.1	98	18	80	V00-Y98
Factors influencing health status and contact with health services	-	-	-	-	-	-	-	-	-	-	-	-	Z00-Z99
Total	100.0	2,390	921	1,469	100.0	484	95	389	100.0	1,906	826	1,080	

Note : Deaths include some visitors .

Figure 3.5
2008
Number & Percentage of Reported Deaths by Nationality and Cause of Death 2008



Reference: Table 3.15

3.15 :

Table 3.16
2008
Reported Deaths by Geographical Region and Age Groups 2008

<i>Total</i>	<i>Age groups</i>																<i>Geographical Region</i>	
	<i>75+</i>	<i>70-74</i>	<i>65-69</i>	<i>60-64</i>	<i>55-59</i>	<i>50-54</i>	<i>45-49</i>	<i>40-44</i>	<i>35-39</i>	<i>30-34</i>	<i>25-29</i>	<i>20-24</i>	<i>15-19</i>	<i>10-14</i>	<i>5-9</i>	<i>1-4</i>		<i><1 yr</i>
59	20	8	7	5	3	3	2	-	-	-	4	1	1	-	1	1	3	Hidd
406	157	65	35	14	25	18	11	16	7	9	6	13	4	1	3	2	20	Muharraq
531	146	64	36	36	36	48	36	34	17	20	21	18	5	1	1	3	9	Manama
197	58	21	25	7	14	10	7	7	6	8	9	6	3	1	1	4	10	Jidhafs
142	57	13	10	3	9	2	7	4	3	5	5	3	1	2	4	3	11	Northern
187	36	22	19	14	10	8	6	12	9	11	12	7	3	1	6	4	7	Sitra
172	46	14	14	7	12	14	11	12	6	8	12	2	2	1	-	4	7	Central
173	41	22	23	12	15	12	4	9	4	4	9	4	4	-	-	1	9	Isa Town
283	71	25	22	13	22	19	18	13	12	15	8	4	4	5	4	6	22	Riffa
82	21	14	3	4	3	3	5	2	4	4	1	1	2	-	-	2	13	Western
11	4	-	-	-	-	1	2	-	2	-	1	-	-	-	-	1	-	Southern
147	19	6	12	10	9	11	16	11	2	7	3	9	10	3	1	2	16	Hamad Town
2,390	676	274	206	125	158	149	125	120	72	91	91	68	39	15	21	33	127	Total

Table 3.17
2008
/
Reported Deaths by Health Region / Health Center and Age Groups 2008

Total	Age groups																Health Region / Health Center	
	75+	70-74	65-69	60-64	55-59	50-54	45-49	40-44	35-39	30-34	25-29	20-24	15-19	10-14	5-9	1-4		<1 yr
460	175	74	43	19	26	21	13	15	6	9	10	14	5	1	4	3	22	Health Region I
119	44	23	11	6	9	4	1	3	1	2	1	1	1	1	1	1	9	Muharraq
146	57	21	12	3	8	8	6	6	3	6	4	6	-	-	2	-	4	Sh.Salman
124	45	19	15	8	7	6	3	3	-	-	4	2	4	-	1	2	5	National Bank of Bahrain - Arad -
71	29	11	5	2	2	3	3	3	2	1	1	5	-	-	-	-	4	National Bank of Bahrain - Dair -
502	135	54	36	36	34	48	34	34	16	21	21	13	5	1	1	2	11	Health Region II
223	55	18	15	12	11	28	13	23	6	12	13	7	4	1	-	1	4	Naim
85	31	9	11	6	5	7	2	5	2	2	-	2	-	-	-	1	2	Ibn Sinna
121	39	18	6	12	9	7	10	2	4	3	3	4	1	-	1	-	2	Sh.Sabah Al Salem
73	10	9	4	6	9	6	9	4	4	4	5	-	-	-	-	-	3	Hooraa
723	216	79	74	29	53	37	31	33	22	25	35	20	10	4	5	14	36	Health Region III
269	67	29	30	17	19	20	12	17	11	10	14	5	3	-	-	3	12	Isa Town
180	53	21	22	6	14	9	7	5	5	7	7	6	3	1	1	4	9	Jidhafs
143	57	11	11	2	10	2	7	5	3	5	6	3	1	2	4	3	11	Budayia
54	18	11	4	1	3	-	2	2	2	1	1	5	1	-	-	2	1	Bilad Al Kadeem
77	21	7	7	3	7	6	3	4	1	2	7	1	2	1	-	2	3	A' Ali
705	150	67	53	41	45	43	47	38	28	36	25	21	19	9	11	14	58	Health Region IV
118	14	5	7	10	7	11	13	5	3	5	2	8	6	4	2	2	14	Hamad Town
187	35	22	19	14	11	8	6	12	9	11	12	7	3	1	6	4	7	Sitra
120	38	10	7	4	8	6	9	11	4	5	3	3	2	3	1	1	5	Hamad Kanoo
162	37	13	13	8	15	11	11	3	8	10	6	1	2	1	2	4	17	East Riffa
60	16	12	2	4	2	2	2	-	3	2	1	1	2	-	-	1	10	Kuwait
47	8	5	5	1	2	3	4	7	1	1	1	1	4	-	-	1	3	Mohammed Jassim Kanoo
11	2	-	-	-	-	2	2	-	-	2	-	-	-	-	-	1	2	Zallaq
NA	NA	NA	NA	NA	NA	NA	NA	NA	NA	NA	NA	NA	NA	NA	NA	NA	NA	Jaw & Asker Clinic *
2,390	676	274	206	125	158	149	125	120	72	91	91	68	39	15	21	33	127	Total

* Jaw and Asker Clinic deaths registered at Mohammed Jassim Kanoo Health Center.

Table 3.18
2008
Reported Deaths by Cause of Death and Age Groups 2008

Cause of Death	Total	Age groups																	ICD-10 Code
		75+	70-74	65-69	60-64	55-59	50-54	45-49	40-44	35-39	30-34	25-29	20-24	15-19	10-14	5-9	1-4	<1 yr	
Certain infectious & parasitic diseases	72	26	9	4	5	4	4	1	6	3	3	2	2	-	-	-	-	3	A00-B99
Neoplasms	256	62	24	36	24	31	23	10	16	7	6	4	2	4	3	3	1	-	C00-D49
Diseases of the blood and blood-forming organs and certain disorders and the immune mechanism	38	5	2	2	2	2	2	2	6	2	4	5	2	1	-	1	-	-	D50-D89
Endocrine, nutritional and metabolic diseases	225	79	47	29	14	22	9	8	1	3	-	1	-	1	-	3	3	5	() E00-E90
Mental and behavioural disorders	3	-	-	-	-	-	1	-	-	-	-	2	-	-	-	-	-	-	F00-F99
Diseases of the nervous system	47	4	5	3	-	5	1	1	2	3	2	3	2	3	5	1	3	4	G00-G99
Diseases of the circulatory system	443	176	85	57	19	15	25	26	17	7	5	5	1	2	1	-	2	-	I00-I99
Diseases of the respiratory system	183	90	30	12	12	6	8	6	2	2	2	-	2	4	-	1	3	3	J00-J99
Diseases of the digestive system	70	28	9	6	4	6	4	4	1	-	2	1	-	1	-	-	2	2	K00-K99
Diseases of the skin and subcutaneous tissue	20	12	3	3	2	-	-	-	-	-	-	-	-	-	-	-	-	-	L00-L99
Diseases of the and musculoskeletal system connective tissue	7	-	-	-	-	-	1	-	1	1	-	1	3	-	-	-	-	-	M00-M99

(Cont'd) Table 3.18 ()
 2008
 Reported Deaths by Cause of Death and Age Groups 2008

Cause of Death	Total	Age groups																	ICD-10 Code
		75+	70-74	65-69	60-64	55-59	50-54	45-49	40-44	35-39	30-34	25-29	20-24	15-19	10-14	5-9	1-4	<1 yr	
Diseases of the genitourinary system	129	53	18	18	9	9	9	4	4	-	2	1	-	-	1	1	-	-	N00-N99
Pregnancy, childbirth and the puerperium	3	-	-	-	-	-	-	-	-	1	2	-	-	-	-	-	-	-	O00-O99
Certain conditions originating in the perinatal period	58	-	-	-	-	-	-	-	-	-	-	-	-	-	-	-	-	58	P00-P99
Congenital malformations, deformations and chromosomal abnormalities	45	-	-	-	-	-	-	-	-	-	-	-	-	-	-	-	3	42	Q00-Q99
Symptoms, signs and abnormal clinical and laboratory findings not elsewhere classified	565	138	37	33	29	53	51	53	42	24	29	30	19	5	3	4	9	6	R00-R99
Injury, poisoning and certain other consequences of external causes	-	-	-	-	-	-	-	-	-	-	-	-	-	-	-	-	-	-	S00-T98
External causes of morbidity and mortality	226	3	5	3	5	5	11	10	22	19	34	36	35	18	2	7	7	4	V00-Y98
Factors influencing health status and contact with health services	-	-	-	-	-	-	-	-	-	-	-	-	-	-	-	-	-	-	Z00-Z99
Total	2,390	676	274	206	125	158	149	125	120	72	91	91	68	39	15	21	33	127	

Note : Deaths include some visitors .

Table 3.19
2008
Reported Deaths by Geographical Region and Cause of Death 2008

Cause of Death	Total	Region												ICD-10 Code
		Southern	مدينة Hamad Town	Western	Riffa	Isa Town	Central	Sitra	Northern	Jidhafs	Manama	Muharraq	Hidd	
Certain infectious and parasitic diseases	72	-	5	4	8	5	6	4	3	6	17	11	3	A00-B99
Neoplasms	256	-	31	3	23	21	19	25	7	28	56	39	4	C00-D49
Diseases of the blood and blood-forming organs and certain disorders involving the immune mechanism	38	-	-	4	6	2	5	2	3	6	7	3	-	D50-D89
Endocrine, nutritional and metabolic diseases	225	-	2	3	28	22	18	17	19	26	41	45	4	() E00-E90
Mental and behavioural disorders	3	-	-	-	1	1	-	-	-	-	-	1	-	F00-F99
Diseases of the nervous system	47	1	4	2	8	3	3	4	2	2	8	10	-	G00-G99
Diseases of the circulatory system	443	2	17	15	45	27	34	33	28	37	104	87	14	I00-I99
Diseases of the respiratory system	183	1	10	8	22	15	9	15	13	9	43	35	3	J00-J99
Diseases of the digestive system	70	-	6	3	6	7	2	5	5	9	18	7	2	K00-K99
Diseases of the skin and subcutaneous tissue	20	-	1	-	3	1	5	3	1	1	2	3	-	L00-L99
Diseases of the musculoskeletal system and connective tissue	7	-	1	-	-	1	2	-	1	1	1	-	-	M00-M99

(Cont'd) Table 3.19 ()
 2008
 Reported Deaths by Geographical Region and Cause of Death 2008

Cause of Death	Total	Region											ICD-10 Code	
		Southern	مدينة Hamad Town	Western	Riffa	Isa Town	Central	Sitra	Northern	Jidhafs	Manama	Muharraq		Hidd
Diseases of the genitourinary system	129	-	11	3	14	12	13	5	7	12	21	26	5	N00-N99
Pregnancy, childbirth and the puerperium	3	-	-	-	-	-	1	-	-	1	-	1	-	O00-O99
Certain conditions originating in the perinatal period	58	-	5	2	12	5	4	3	9	4	6	6	2	P00-P99
Congenital malformations, deformations and chromosomal abnormalities	45	-	8	5	6	3	4	3	2	4	1	8	1	Q00-Q99
Symptoms, signs and abnormal clinical and laboratory findings not elsewhere classified	565	5	23	22	72	34	37	35	33	38	160	88	18	R00-R99
Injury, poisoning and certain other consequences of external causes	-	-	-	-	-	-	-	-	-	-	-	-	-	S00-T98
External causes of morbidity and mortality	226	2	23	8	29	14	10	33	9	13	46	36	3	V00-Y98
Factors influencing health status and contact with health services	-	-	-	-	-	-	-	-	-	-	-	-	-	Z00-Z99
Total	2,390	11	147	82	283	173	172	187	142	197	531	406	59	

Note : Deaths include some visitors .

Table 3.20
2008 - 2004 **100,000**
Death Rates per 100,000 Population by Cause of Death and Nationality 2004 - 2008

Cause of Death	2008		2007		2006		2005		2004		رمز ICD-10 Code
	Non-Bah	Bah	Non-Bah	Bah	Non-Bah	Bah	Non-Bah	Bah	Non-Bah	Bah	
Certain infectious & parasitic diseases	2.1	11.2	3.1	10.0	4.9	15.5	3.6	18.7	4.1	15.5	A00-B99
Neoplasms	3.3	44.1	5.3	40.4	8.5	49.9	7.6	54.9	9.7	54.1	C00-D49
Diseases of the blood and blood-forming organs and certain disorders involving the immune mechanism	0.7	6.3	0.2	6.6	0.4	6.1	0.4	8.2	0.4	9.1	D50-D89
Endocrine, nutritional and metabolic diseases	1.9	39.8	4.7	42.8	12.0	67.5	9.8	45.9	8.9	40.8	E00-E90
Mental and behavioural disorders	-	0.6	0.4	0.8	1.1	1.1	-	1.8	0.7	0.7	F00-F99
Diseases of the nervous system	1.8	6.9	1.6	7.8	3.9	7.2	2.5	9.1	1.9	8.4	G00-G99
Diseases of the circulatory system	10.7	71.0	16.0	69.2	29.6	79.5	27.2	80.0	27.9	94.2	I00-I99
Diseases of the respiratory system	2.8	31.1	3.9	29.0	2.1	26.4	6.5	27.9	3.3	26.5	J00-J99
Diseases of the digestive system	1.4	11.5	1.6	10.0	2.1	11.3	3.6	12.3	3.7	13.2	K00-K99
Diseases of the skin and subcutaneous tissue	0.2	3.5	-	4.4	1.1	4.1	0.7	10.5	0.7	8.9	L00-L99
Diseases of the musculoskeletal system and connective tissue	0.5	0.7	0.2	1.3	0.4	1.1	0.7	0.4	0.7	0.9	M00-M99

(Cont'd) Table 3.20 ()
 2008 - 2004 100,000
 Death Rates per 100,000 Population by Cause of Death and Nationality 2004 - 2008

Cause of Death	2008		2007		2006		2005		2004		رمز ICD-10 Code
	Non-Bah	Bah	Non-Bah	Bah	Non-Bah	Bah	Non-Bah	Bah	Non-Bah	Bah	
Diseases of the genitourinary system	2.3	21.6	1.4	18.4	2.5	16.1	3.3	18.3	2.2	18.0	N00-N99
Pregnancy, childbirth and the puerperium	0.2	0.4	-	0.6	-	0.4	-	-	-	0.7	O00-O99
Certain conditions originating in the perinatal period	2.6	8.0	2.3	7.2	4.9	9.4	3.6	11.6	7.8	14.6	P00-P99
Congenital malformations, deformations and chromosomal abnormalities	1.9	6.3	3.7	7.8	3.5	6.3	3.3	8.5	4.1	8.2	Q00-Q99
Symptoms, signs and abnormal clinical and laboratory findings not elsewhere classified	30.1	73.3	25.4	63.7	41.3	70.6	38.4	72.0	35.7	77.4	R00-R99
Injury, poisoning and certain other consequences of external causes	-	-	-	-	-	-	-	-	-	-	S00-T98
External causes of morbidity and mortality	22.5	18.2	27.2	16.3	62.4	20.7	39.8	21.2	41.6	19.9	V00-Y98
Factors influencing health status and contact with health services	-	-	-	-	-	-	-	1.1	-	-	Z00-Z99
Total	85.1	354.5	96.9	336.3	180.6	393.2	151.0	402.5	153.6	411.2	

Note : Deaths include some visitors .

Please refer to conventions regarding the rates mentioned in this table .

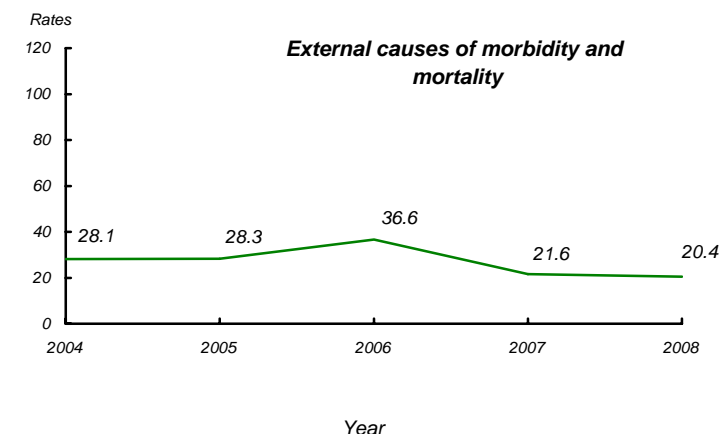
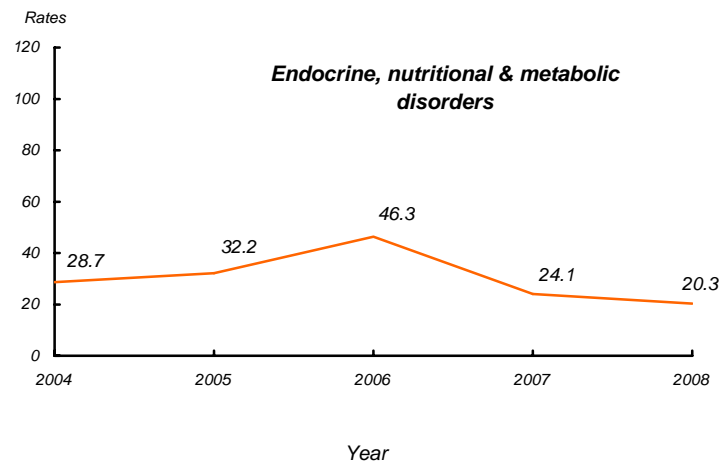
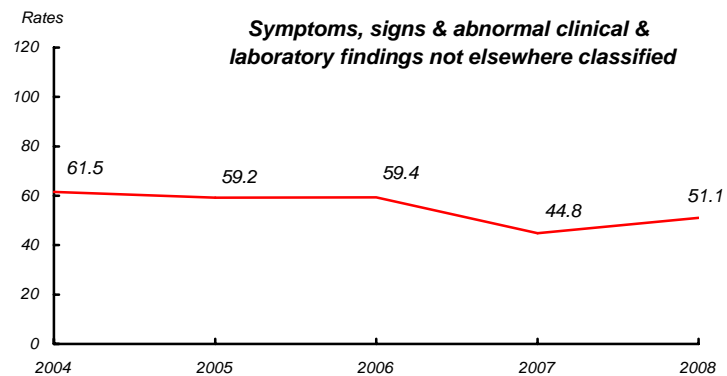
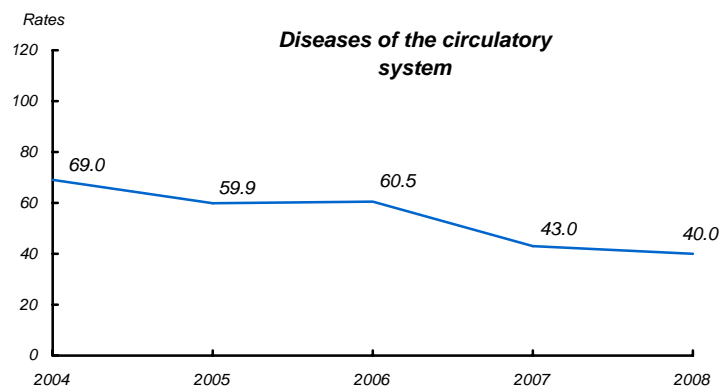
Table 3.21
2008 - 2004
100,000
The Top Ten Leading Causes of Death Rates Per 100,000 Population 2004 - 2008

<i>%change</i> <i>08-07</i>	<i>%change</i> <i>07-06</i>	<i>%change</i> <i>06-05</i>	<i>%change</i> <i>05-04</i>	<i>2008</i>	<i>2007</i>	<i>2006</i>	<i>2005</i>	<i>2004</i>	<i>Principal Diagnosis</i>	<i>ICD-10</i> <i>Code</i>
14.0	-24.6	0.3	-3.8	51.1	44.8	59.4	59.2	61.5	Symptoms, signs and abnormal clinical and laboratory findings not elsewhere classified	R00-R99
-6.9	-28.9	1.0	-13.2	40.0	43.0	60.5	59.9	69.0	Diseases of the circulatory system	I00-I99
0.2	-32.3	-7.5	-0.9	23.1	23.1	34.1	36.8	37.2	Neoplasms	C00-D49
-5.4	-41.0	29.5	0.5	20.4	21.6	36.6	28.3	28.1	External causes of morbidity and mortality	V00-Y98
-15.6	-48.0	44.1	12.0	20.3	24.1	46.3	32.2	28.7	() Endocrine, nutritional and metabolic diseases	E00-E90
-0.4	-2.9	-13.3	11.6	16.5	16.6	17.1	19.7	17.7	Diseases of the respiratory system	J00-J99
16.6	-8.3	-13.1	4.5	11.7	10.0	10.9	12.6	12.0	Diseases of the genitourinary system	N00-N99
-1.4	-42.3	-11.8	16.1	6.5	6.6	11.4	13.0	11.2	Certain infectious & parasitic diseases	A00-B99
7.2	-24.5	-13.2	-6.4	6.3	5.9	7.8	9.0	9.6	Diseases of the digestive system	K00-K99
9.2	-37.7	-10.5	-28.3	5.2	4.8	7.7	8.6	12.0	Certain Conditions Originating in the Perinatal Period	P00-P99

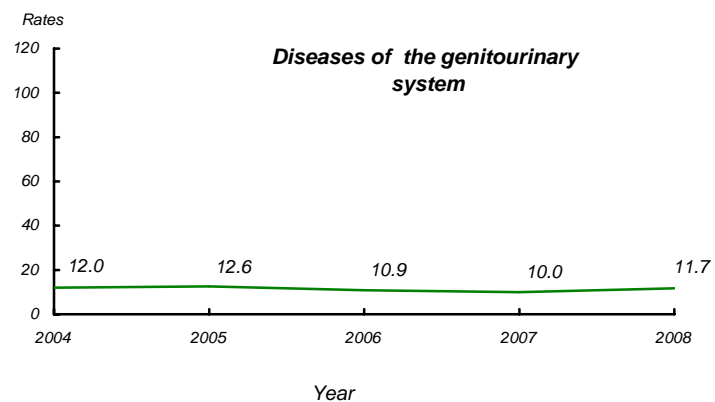
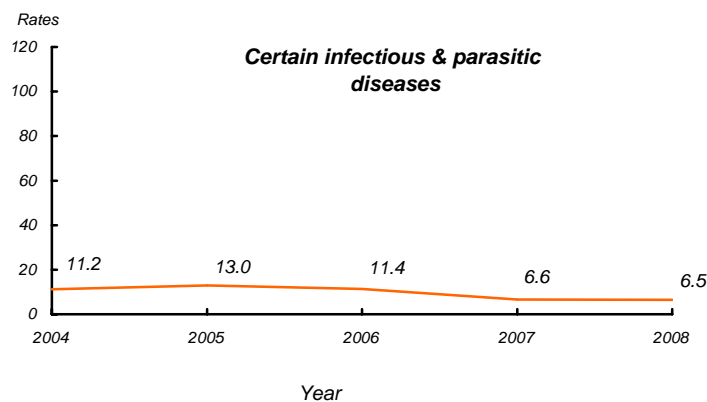
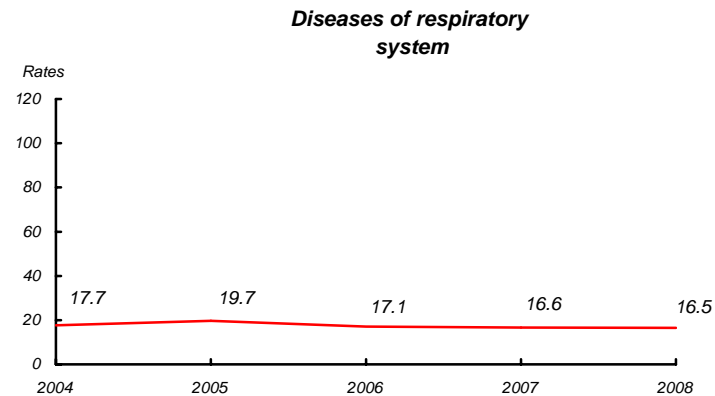
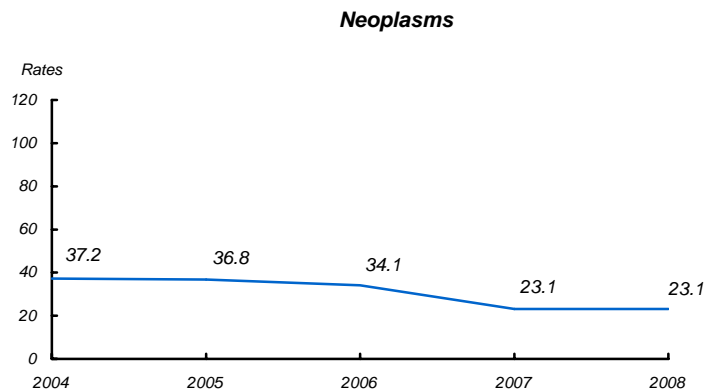
Note: a) Deaths include some visitors .

b) Occurrence of the 10 leading causes are based on the fasal year, therefore some previous years rates might be affected .

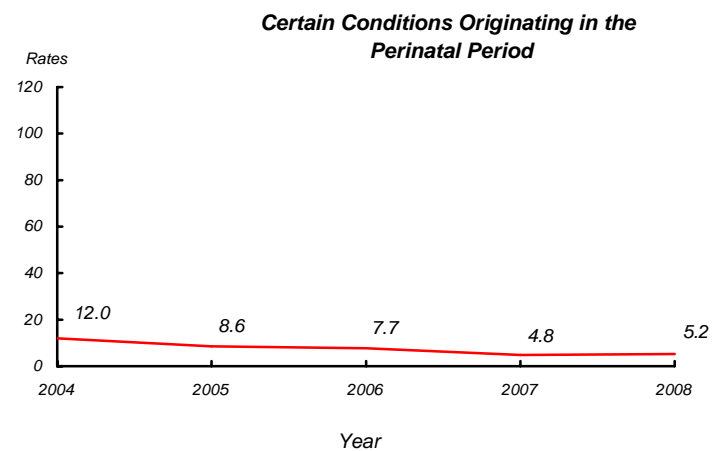
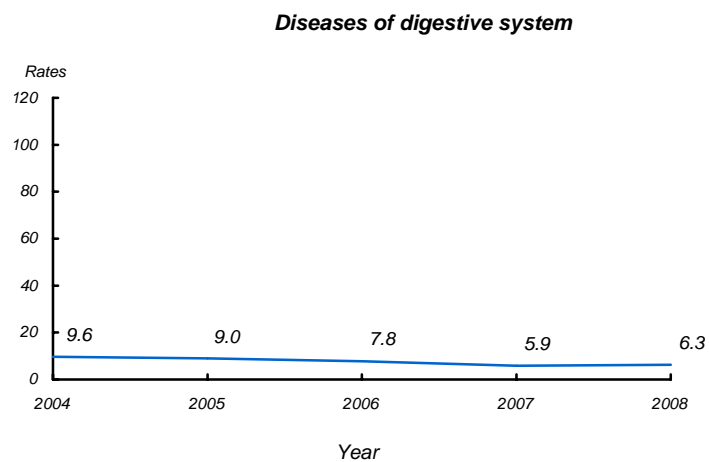
Figure 3.6
2008 - 2004 **100,000**
The Top Ten Leading Causes of Death Rates Per 100,000 Population 2004 - 2008



(Cont'd) Figure 3.6 ()
 2008 - 2004 100,000
 The Top Ten Leading Causes of Death Rates Per 100,000 Population 2004 - 2008



(Cont'd) Figure 3.6 ()
 2008 - 2004 100,000
 The Top Ten Leading Causes of Death Rates Per 100,000 Population 2004 - 2008



Reference: Table 3.21

مرجع: جدول 3.21

جدول 3.22 Table 3.22

2008
The Top Ten Leading Causes of Death by Principal Diagnosis, Nationality and Sex 2008

%	Total			Non-Bahraini			Bahraini			Principal Diagnosis	ICD-10
	Total	Female	Male	Total	Female	Male	Total	Female	Male		
23.6	565	151	414	171	16	155	394	135	259	Symptoms, Signs and Abnormal Clinical and Laboratory Findings, not elsewhere classified	R00-R99
18.5	443	208	235	61	13	48	382	195	187	() Diseases of the Circulatory System	I00-I99
10.7	256	122	134	19	10	9	237	112	125	Neoplasms	C00-D49
9.5	226	37	189	128	19	109	98	18	80	External Causes of Morbidity and Mortality	V00-Y98
9.4	225	107	118	11	3	8	214	104	110	() Endocrine, Nutritional and Metabolic Diseases	E00-E90
7.7	183	71	112	16	3	13	167	68	99	Diseases of the Respiratory System	J00-J99
5.4	129	51	78	13	3	10	116	48	68	Diseases of the Genitourinary System	N00-N99
3.0	72	33	39	12	5	7	60	28	32	Certain Infectious & Parasitic Diseases	A00-B99
2.9	70	31	39	8	3	5	62	28	34	Diseases of the Digestive System	K00-K99
2.4	58	31	27	15	7	8	43	24	19	Certain Conditions Originating in the Perinatal Period	P00-P99
93.2	2,227	842	1,385	454	82	372	1,773	760	1,013	Total	
6.8	163	79	84	30	13	17	133	66	67	Others	
100.0	2,390	921	1,469	484	95	389	1,906	826	1,080	Grand Total	

جدول 3.23

2008

Infant Top Ten Leading Causes of Death by Principal Diagnosis, Nationality and Sex 2008

%	Total			Non-Bahraini			Bahraini			Principal Diagnosis	ICD-10
	Total	Female	Male	Total	Female	Male	Total	Female	Male		
45.7	58	31	27	15	7	8	43	24	19	Certain Conditions Originating in the Perinatal Period	P00-P99
33.1	42	22	20	10	6	4	32	16	16	() Congenital Malformations, Deformations and Chromosomal Abnormalities	Q00-Q99
4.7	6	1	5	1	1	-	5	-	5	Symptoms, Signs and Abnormal Clinical and Laboratory Findings, not elsewhere classified	R00-R99
3.9	5	-	5	-	-	-	5	-	5	() Endocrine, Nutritional and Metabolic Diseases	E00-E90
3.1	4	-	4	1	-	1	3	-	3	Mental and Behavioural Disorders	G00-G99
3.1	4	2	2	3	2	1	1	-	1	External Causes of Morbidity and Mortality	V00-Y98
2.4	3	-	3	-	-	-	3	-	3	Certain Infectious & Parasitic Diseases	A00-B99
2.4	3	1	2	2	-	2	1	1	-	Diseases of the Respiratory System	J00-J99
1.6	2	1	1	1	-	1	1	1	-	Diseases of the digestive system	K00-K99
100.0	127	58	69	33	16	17	94	42	52	Total	
-	-	-	-	-	-	-	-	-	-	Others	
100.0	127	58	69	33	16	17	94	42	52	Grand Total	

Note: this table represent Infant Top Ten Leading Causes of Death, but in 2008 only nine groups based on ICD-10 codes.

()

2008